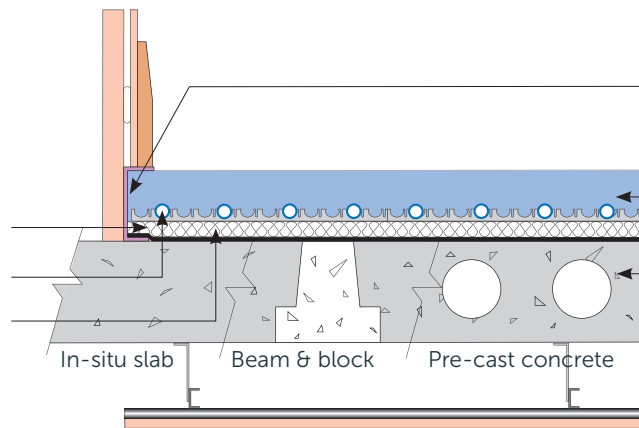


AST14 – 14mm Fastflo™ with tacker panel for acoustic screed floors.

Complies with Robust Detail E-FC-04, E-FC-05 & E-FC-06

Supplied by Nu-Heat

Nu-Heat cliprail with self-adhesive backing
14mm Fastflo™ tubing
Nu-Heat tacker panel (SD grade EPS)



Supplied by others

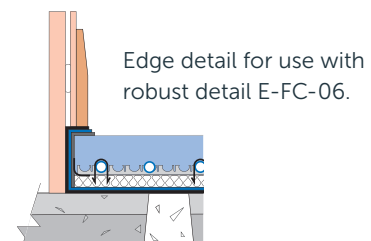
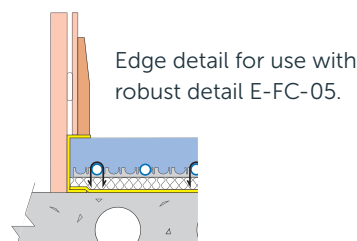
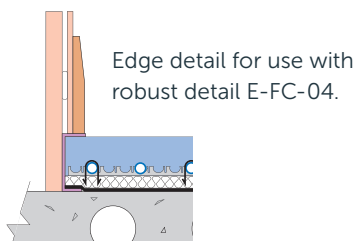
Edge detail varies according to Robust Detail chosen – see below

Screed (see *Robust Details* handbook)

In-situ slab, beam & block or pre-cast concrete plank as in the *Robust Details* handbook

Suitable ceiling treatment as in the *Robust Details* handbook

Complies with Robust Detail E-FC-04, E-FC-05 and E-FC-06



FLOOR HEATING TUBE

Nu-Heat's 14mm Fastflo™ tubing is extremely flexible which means that it can easily be installed around the numerous turns typical to any design. The use of multiple, shorter Fastflo™ coils within each temperature control zone means the tubing is installed at closer centres, suitable even for low temperature heat sources (e.g. heat pumps).

SCREED

Screed of 80kg/m² mass per unit area must be applied. Adding 1mm to the screed depth offsets the combined volume of pipe and cliprail. With liquid screeds the tube must be covered by at least 30mm. This depth should be measured at the centre of span of the pre-cast plank, hence the highest point of the floor.

INSULATION

BSEN 1264:4 'floor heating and components' requires at least 25mm of polystyrene (R = 0.75m²k/w) installed below the pipes in rooms above heated areas. Ground floors should comply with the requirements of Part L of the Building Regulations.

EXPANSION JOINTS

Expansion joints must be incorporated in areas over 40m², or with length greater than 8m and across doorways and other changes of section. Where tube passes across expansion joints it must be covered with sleeving for at least 200mm either side.

RESILIENT LAYER

E-FC-4: Iso Rubber by Thermal Economics.

E-FC-5: 10mm YELOfon by Collecta.

E-FC-6: Regupol E48 by CMS Acoustic Solutions.

EDGE ISOLATION STRIP

E-FC-4: Iso Edge flanking strip by Thermal Economics.

E-FC-5: E-strip perimeter edging by Collecta.

E-FC-6: Regupol E48 by CMS Acoustic Solutions.

www.nu-heat.co.uk/floorspecs