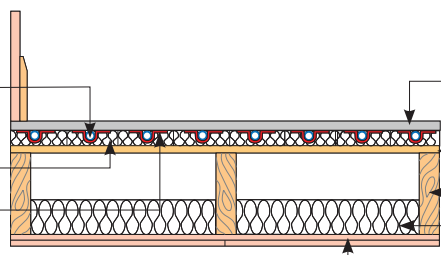


DPLK14 – 14mm Fastflo™ in low-profile diffuser panels in a floating floor, with Knauf board

Supplied by Nu-Heat

14mm Fastflo™ tubing
Nu-Heat TriPanel™ –
25mm EHD polystyrene
Heat transfer plates



Supplied by others

Knauf board
Floor deck
Timber joists
Insulation
Plasterboard

FLOOR HEATING TUBE

Nu-Heat's 14mm Fastflo™ tubing is extremely flexible which means that it can easily be installed around the numerous turns typical to any design. The use of multiple, shorter Fastflo™ coils within each temperature control zone means the tubing is installed at closer centres to ensure a more even heat distribution.

NU-HEAT TRIPANEL

Nu-Heat TriPanel™ is a high quality, pre-moulded, versatile product designed to allow three tube spacings – 115mm, 175mm and 230mm. Dimensions: 1400mm x 700mm x 25mm.

INSULATION

If installed above unheated areas or in ground floors, insulation should be increased to at least 70mm 'Celotex' or equivalent, (or to building regulations Part L, whichever is greater).

KNAUF BOARD

Knauf board is a gypsum-based composite that is capable of withstanding the temperatures involved in underfloor heating. It offers significant benefit over chipboard both acoustically and in terms of the quality feeling of the floor due to its greater density. More importantly for underfloor heating it is more conductive which enables an increased heat output.

If for any reason you choose not to use Knauf board please inform Nu-Heat, as it will affect the underfloor heating design.

FLOOR COVERINGS

Tiles, stone and thin laminates offer benefits such as improved response time and higher heat output. A quality flexible adhesive should be used for fixing the tiles and a decoupling membrane is strongly recommended. Carpets can be used but the Tog value when combined with performance underlay should be no greater than 2.5. If the system is powered by a heat pump greater restrictions apply. Natural timber with a low moisture content can be used, but care must be taken to properly acclimatise the wood by following manufacturers' instructions.

WARRANTIES/INSURANCE

Manufacturer's warranty: all UFH tube supplied by Nu-Heat is covered by a 50-year warranty, the first 10 years of which are insurance-backed.

Product liability: Nu-Heat maintains product liability insurance to £5 million.

Professional indemnity: As Nu-Heat's design service is integral to the operational effectiveness of the UFH system, the company holds professional indemnity insurance of £5 million to cover all aspects of our consultation and design services.

